



Mobility & Care Manager

MSI Installer

English

M-000011.1 v1.4.0

Table of contents

Table of contents.....	2
Change history.....	12
1. Introduction.....	3
2. Download	3
3. System requirements	4
4. Description of MSI	4
4.1. Overview.....	4
4.2. Features.....	5
4.3. MSI Properties.....	5
5. Installation.....	6
5.1. Wizard	6
5.2. Command line	8
6. Uninstall.....	8
7. Update with more recent revision	8
8. Reconfiguring the database connection after installation.....	9
8.1. Command line parameter when executing the application.....	9
8.2. Change settings from within the application	10
8.3. Edit config file found in user profile	11
8.4. Edit config file found in program folder	11
9. How to reach us.....	12

1. Introduction

This document is about the MSI package for the software **Mobility & Care Manager** from *compliant concept AG*. The software is also available as ClickOnce deployment which has the advantage that the application is checking itself if an update is available. Compliant concept AG recommends its customers to use the ClickOnce option as default. A comparison of the installation options can be found in the document “Mobility & Care Manager Overview” (DOC-000023.1).

The MSI package is intended for larger IT administrations who like to have a better control about the particular update time and who need a MSI package for their installation process.

This document does not explain the function of Windows Installer or the automatic distribution of an application with MSI. It only describes the parameters that can be adjusted by an IT specialist.

Please read this information carefully.

2. Download

The current MSI package may be downloaded from our website:

www.compliant-concept.ch/en/software

3. System requirements

Operating System	Windows Vista Windows 7 Windows 8 / 8.1 Windows 10 Windows based Terminal Servers
Framework	.Net Framework 4.0
Database	MS SQL Server 2008R2 or newer MS SQL Server 2012 Express will be installed during standard installation process if not present
Processor	1.4 GHz (2 GHz recommended)
Screen Resolution	At least 1024x768
Hard Disk Space	Application: 100 MB SqlExpress: 2.5GB Database: approx. 2GB per year (depending on usage and number of Mobility Monitor devices)
RAM memory	2 GB (4 GB recommended)
Internet Access	Required for - installation using Click-Once setup - automatic registration and activation of licence. - optional for TeamViewer support
USB Port	Required for importing the mobility data (not needed for Wireless system)
Colour Printer	Optional for Print-outs of nursing records

4. Description of MSI

4.1. Overview

The configuration of the installation may be done by command line parameters or through a graphical setup assistant (wizard).

- On the target machine a 32-bit installation of the “Mobility & Care Manager” is performed.
- It is an “all user” installation (all windows users logged into this machine may open the application).
- Default installation path is:
"%ProgramFiles(x86)%\compliant concept AG\Mobility and Care Manager\"
- A shortcut is placed in the start menu.
- A shortcut is placed on the desktop.
- If not present, a config file containing the database connection string (see 4.3) will be written to %LocalAppData%\compliant_concept\ when starting the application.

4.2. Features

Feature	Required	ID	Description
Mobility & Care Manager	Yes	FeatureMCMBinaries	minimum required application files
Tools / Team Viewer	Optional	FeatureTeamViewer	copies a TeamViewer-executable for online support
Samples	Yes	FeatureSamples	sample data
WirelessServer Updates	Optional	FeatureWirelessServerUpdates	Copies installers for the latest version of the WirelessServer. Required for customers with LiveView.

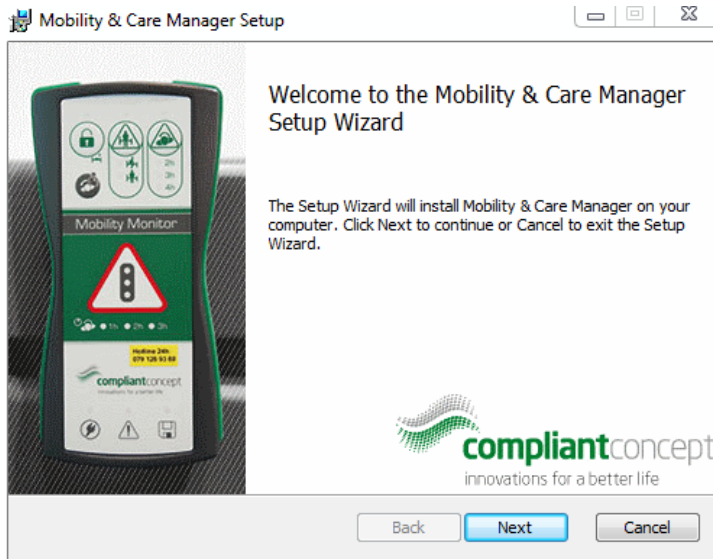
4.3. MSI Properties

The most important properties that you might want to adjust are described below.

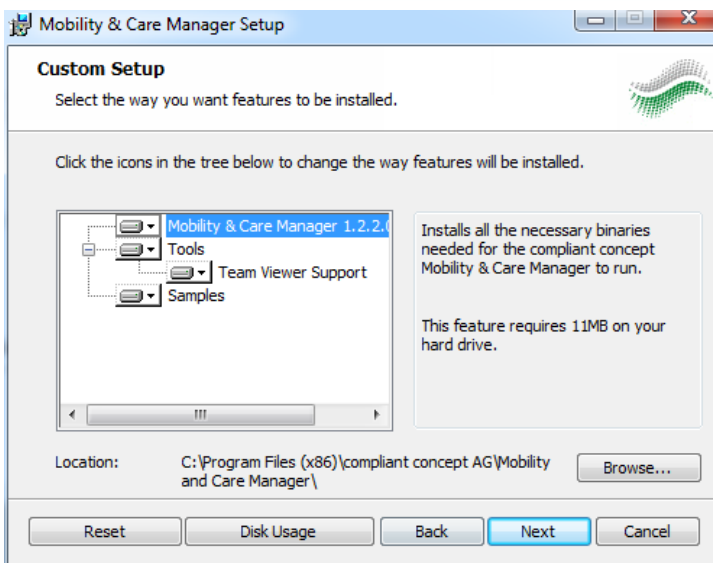
Property	Allowed values / Examples	Default Value	Description
MM_AUTHENTICATION	Integrated Security=True or User Id=SomeUserName; Password=SomeSecretPW	User Id=mobility_monitoring; Password=herT77u//g?dk!ms!	Authentication type and credentials. „Integrated security=True“ uses Windows Authentication to access the SQL server. If „Id=“ and „password=“ are used instead, SQL server authentication is used.
MM_DATA_SOURCE	192.1.0.3\SqLExpress SERVER_NAME\SQLEXPRESS localhost\SQLEXPRESS	.\SQLEXPRESS	SQL Server name and instance name.
MM_INITIAL_CATALOG	MobilityMonitoring	MobilityMonitoring	Database name
MM_DB_SETTINGS_LOCKED	DBSettingsLocked=true DBSettingsLocked=false	<i>not set</i> (DBSettingsLocked=false)	Recommended to set 'true'. If property is set and the database is not found (due to a server outage) then the user will <u>not</u> be prompted to change connection properties and the application will terminate.

5. Installation

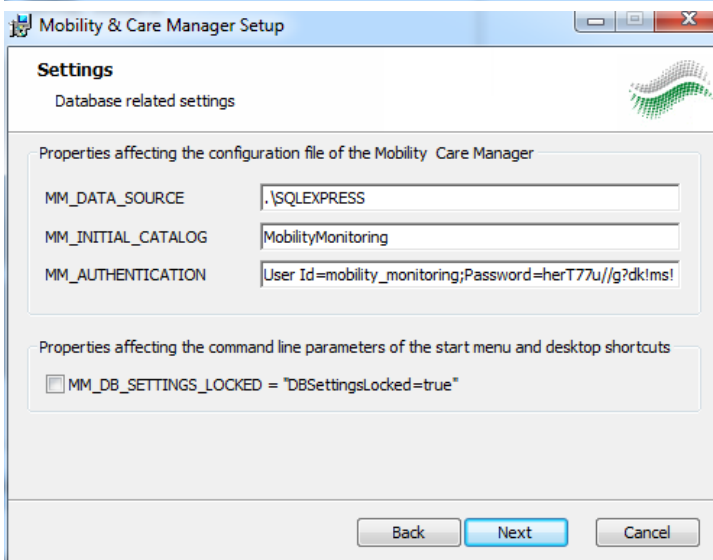
5.1. Wizard



1. Welcome Screen



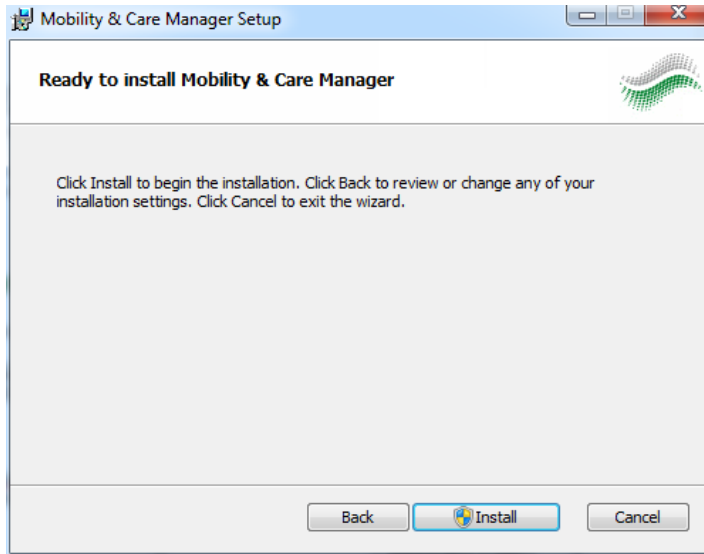
2. Choose features → section 4.2



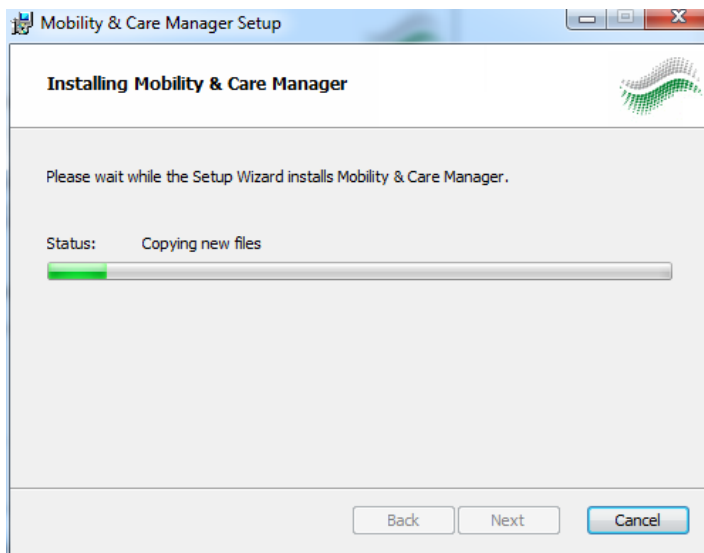
3. Set configuration

→ properties are described in section 4.3
 → When the mouse pointer is moved into the edit area then some hints with examples are displayed.

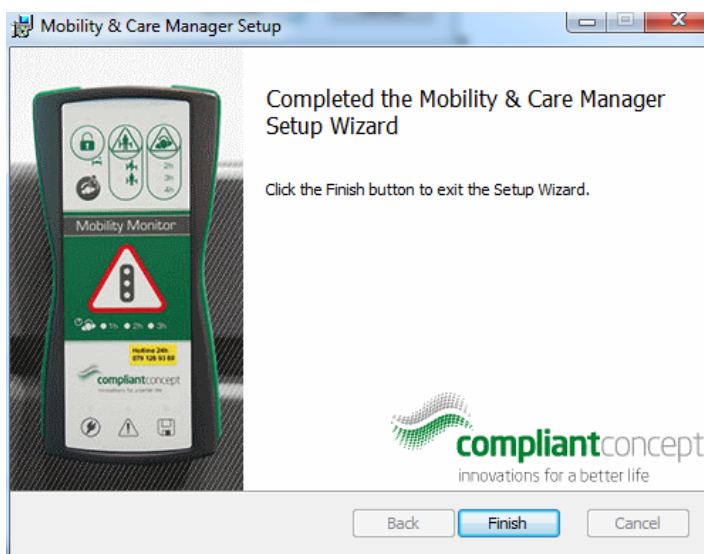
MM_DATA_SOURCE	Database server instance
MM_INITIAL_CATALOG	Database name
MM_AUTHENTICATION	DB server login information (e.g. Sql user and password)
MM_DB_SETTINGS_LOCKED	The user cannot change database connection settings when the database is not available.



4. Start installation



5. Installation progress indication



6. Finish page

5.2. Command line

Usage:

An overview of command line options for MSI is available here:

<http://msdn.microsoft.com/en-us/library/aa367988%28v=vs.85%29.aspx>

The default values of properties from section 4.3 may be overwritten using the following pattern:

```
PROPERTY_NAME="new value"
```

Example 1: configuration and installation from command prompt

```
C:\Install>"Mobility & Care Manager 1.1.1.1.msi" /passive  
MM_DATA_SOURCE="LOCALHOST\SQLEXPRESS" MM_AUTHENTICATION="User  
Id=my_db_username;Password=the_secret"  
MM_INITIAL_CATALOG="MobilityMonitoring"
```

Example 2: minimal installation with required features only (without TeamViewer)

```
C:\Install>"Mobility & Care Manager 1.1.1.1.msi"  
/passive ADDLOCAL=FeatureMCMBinaries,FeatureSamples
```

6. Uninstall

The application can be uninstalled through the windows control panel. Since all the data are stored in a database, uninstalling the application will not delete any user data.

The folder %LocalAppData%\compliant_concept\ and all its content should be deleted manually.

7. Update with more recent revision

When updating the application with a more recent MSI then the old revision will first be uninstalled.

Warning: All settings must be reconfigured in the wizard (no settings are copied from the old installation)! The same is true when performing a silent installation from the command prompt: features from section 4.2 and properties from section 4.3 needs to be provided as arguments once again.

Warning: If you want to change the database connection settings then remove the config file from %LocalAppData%\compliant_concept\ manually in order the changes to take effect.

8. Reconfiguring the database connection after installation

There are different ways for changing the database connection properties after installation. The priorities of the different possibilities are as follows. This means a method with higher priority (smaller number) will overrule a method with lower priority.

1. Command line parameter when executing the application
2. Change settings from within the application
3. Edit config file found in user profile
4. Edit config file found in program folder

8.1. Command line parameter when executing the application

The following parameters can be passed as arguments.

Parameter	Usage & Example	Description
SqlInstance	/SqlInstance= SERVER_NAME\SQLEXPRESS	SQL Server name and instance name.
Database	/Database=MobilityMonitoring	Database name
SqlAuthentication	/SqlAuthentication=windows /SqlAuthentication=sql	Authentication type and credentials. „windows“ uses Windows Authentication to access the SQL server. If “sql” is specified then the SqlUser and Password must be specified.
SqlUser	/SqlUser=mobility_monitoring	Sql User when not using windows authentication mode.
SqlPwd	/SqlPwd=007	Password for Sql User when not using windows authentication mode.

Example 1: Windows authentication for SqlServer access

```
MobilityMonitoring.exe /SqlInstance=localhost\sqlexpress
                        /Database=MobilityMonitoring /SqlAuthentication=windows
```

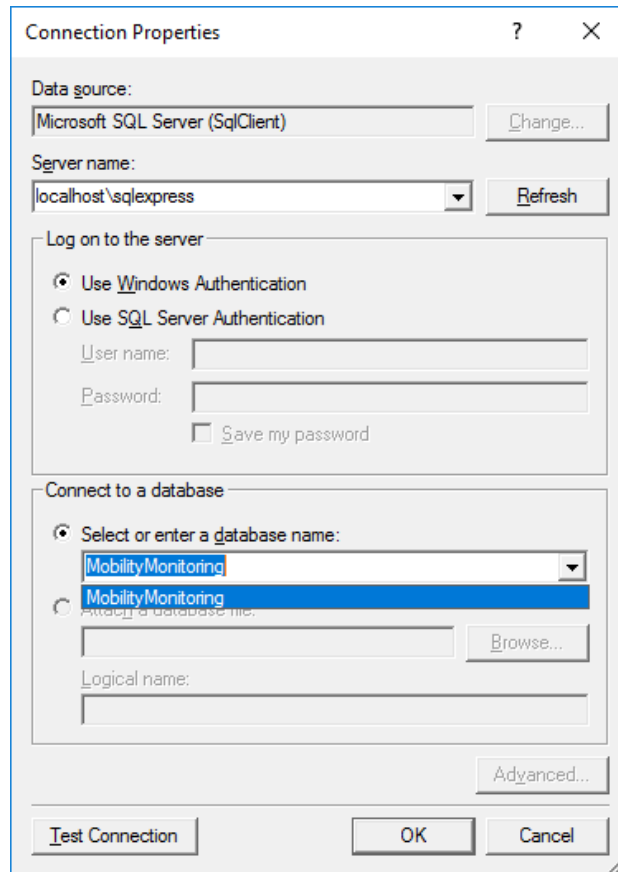
Example 2: Sql user and password

```
MobilityMonitoring.exe /SqlInstance= localhost\sqlexpress
                        /Database=MobilityMonitoring /SqlAuthentication=sql
                        /SqlUser=mobility_monitoring /SqlPwd=007
```

8.2. Change settings from within the application

If no valid connection properties are found at start-up (and the argument `DBSettingsLocked=true` is absent) the user is prompted whether to start a *Default Installation* or the *Custom Installation*. Choose *Custom Installation* to proceed to the following screen.

If the current database settings are valid then the application starts normally. In this case, choose Settings / Database / Manage connection to get to the following screen.



This configuration is saved in a config file in the user profile (see section 8.3).

8.3. Edit config file found in user profile

A config file is found in the windows user profile at this location:

```
%LocalAppData%\compliant_concept\MobilityMonitoring.exe_StrongName_{cryptic string}\{version}\user.config
```

Example path:

```
C:\Users\UserName\AppData\Local\Compliant_Concept\MobilityMonitoring.exe_StrongName_ybpiuzft0oba1x30nswumx23zbz100qe\1.2.5.1\user.config
```

In the config file, a part of the value (underlined) of setting `MobilityMonitoringDataEntities` can be changed:

```
<?xml version="1.0" encoding="utf-8"?>
<configuration>
  <userSettings>
    <CompliantConcept.MobilityMonitoring.Properties.Settings>
      <setting name="UpgradeSettings" serializeAs="String">
        <value>False</value>
      </setting>
      <setting name="MobilityMonitoringDataEntities" serializeAs="String">
        <value>metadata=res://*/DataEntities.csd|res://*/DataEntities.ssd|res://*/DataEntities.msl;provider=System.Data.SqlClient;provider connection string="Data Source=.\sqlexpress;Initial Catalog=MobilityMonitoring;Integrated Security=True;multipleactiveresultsets=True;App=EntityFramework"</value>
      </setting>
      <setting name="MobilityMonitoringDataEntities_Install" serializeAs="String">
        <value>metadata=res://*/DataEntities.csd|res://*/DataEntities.ssd|res://*/DataEntities.msl;provider=System.Data.SqlClient;provider connection string="Data Source=.\sqlexpress;Initial Catalog=MobilityMonitoring;Integrated Security=True;multipleactiveresultsets=True;App=EntityFramework"</value>
      </setting>
    </CompliantConcept.MobilityMonitoring.Properties.Settings>
  </userSettings>
</configuration>
```

File user.config

The values from `Data Source=`, `Catalog=` as well as the authentication method (`Integrated Security=True` or `User Id=SomeUserName;Password=SomeSecretPW`) may be changed directly in the file. The allowed values are the same as described in section 4.3.

8.4. Edit config file found in program folder

A config file with name `MobilityMonitoring.exe.config` is found in the program folder. In this file, a setting with name `MobilityMonitoringDataEntities` can be found. The value may be changed as described above in section 8.3.

Default path to config file:

```
C:\Program Files (x86)\compliant concept AG\Mobility and Care Manager\MobilityMonitoring.exe.config
```

9. How to reach us

Do you have any questions about Mobility Monitor and Mobility & Care Manager? Our Support Team will gladly assist you by phone or email.

Switzerland

Attendant: +41 44 552 15 00
 Phone Support: +41 44 552 15 03
 Fax: +41 44 552 15 09
 Email: support@compliant-concept.ch

compliant concept AG
 Undermuelistrasse 28
 CH-8320 Fehraltorf
www.compliant-concept.ch

International

Support and Contact Addresses for Distributors
<http://www.compliant-concept.ch/en/support>

Change history

Version	Date	Change	Resp.	Reviewed	Approved
1.4	13.12.2016	First translation from German document v1.4.0	men	jdo	men