



MM Software installation

Procedure in a multi-tenant environment

M-000022.en v1.0.0

Content

CONTENT 2

1. SCOPE 2

2. SYSTEM OVERVIEW 2

3. INSTALLATION PROCEDURE 3

DOCUMENT VERSIONS 5

1. Scope

This document describes the procedure to install the software for the Mobility Monitor system from compliant concept in a multi-tenant environment. This is when several institutions use the application on the same IT infrastructure.

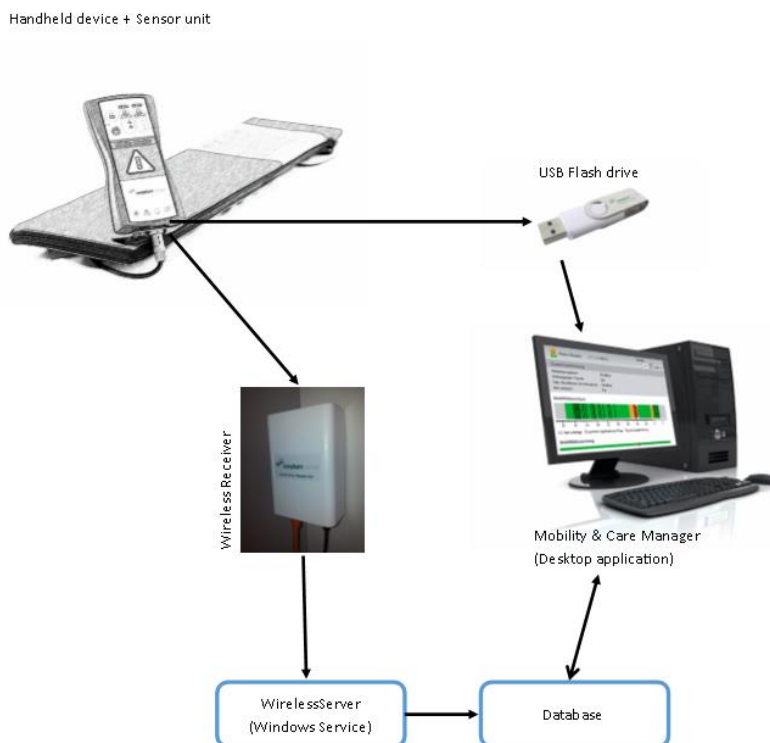
A rough overview of the procedure is described here. More detailed installation instructions will be found in referenced documents.

There will be one database for every single institution to ensure data separation.

2. System Overview

2.1. Mobility Monitor for a single institution

For a single institution, the system setup looks like this:



2.2. Multiple tenants

- There will be 1 database for each tenant. Of course, all databases may be hosted on the same SQL Server.
- One instance of the WirelessServer service may handle Wireless Receivers from multiple locations for different databases.
- Die Desktop application will be configured to connect to one specified database at a time (using config file or command parameters).

3. Installation Procedure

Proceed with the installation steps in the order listed below! We assume that there is a MS SQL Server available already.

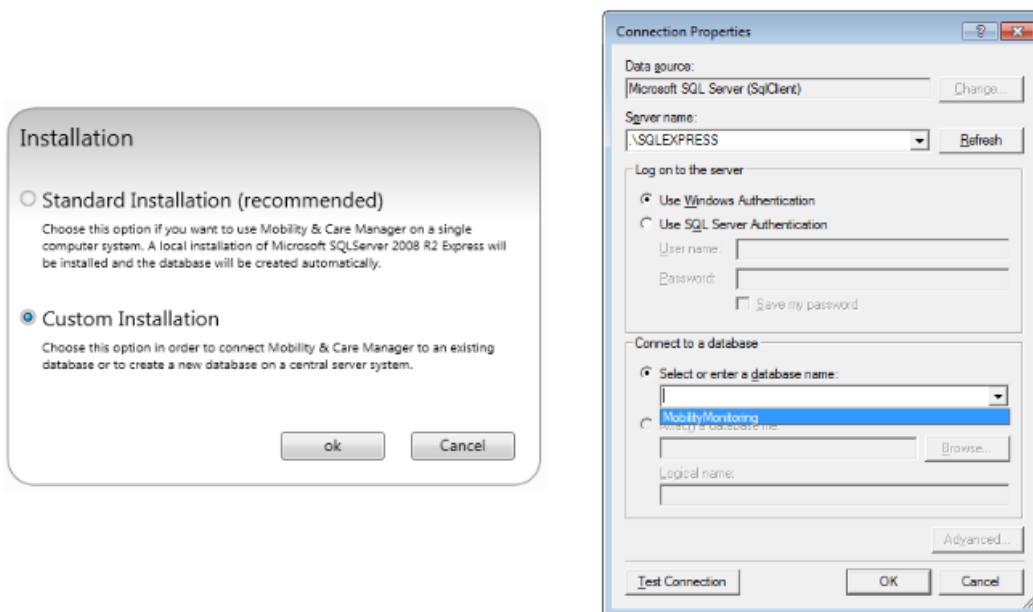
3.1. Client application on test computer

Start with installing the Mobility & Care Manager application on any machine that can access the SQL Server. Use the same version of the software as you will roll out later on to the end users.

Note1: Download from www.compliant-concept.ch/en/software

3.2. Creation of “golden image” database

Start the Mobility & Care Manager software for the first time and choose “Custom installation”. This leads to a screen to provide SQL server credentials and to create the database “MobilityMonitoring”. See user manual for Mobility & Care Manager (**M-000007.1**)



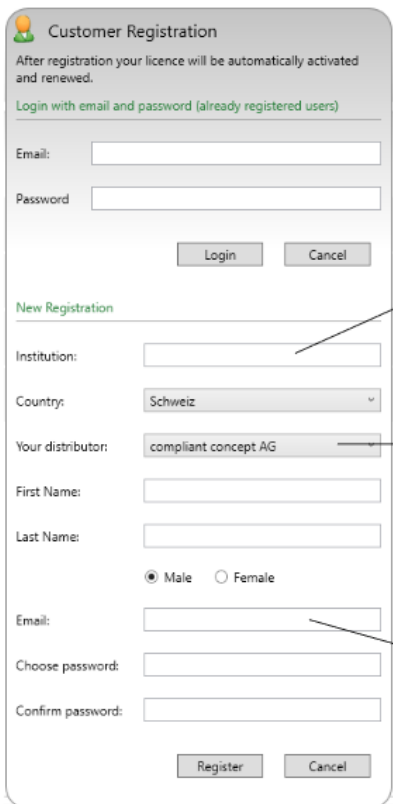
If any default settings should be changed (e.g. default display language, password protected application login, activation of USB import from terminal services etc), this can be done now from within the Mobility & Care Manager application. Settings are stored into the database.

Note1: it is not possible to choose a different name for the database during creation. You can rename the DB later on.

Note 2: It is recommended to set the Windows language of the client to the language of your current location. Some sample data will then be put into the database in the current windows language.

3.3. Registering the organization on the license server

After the DB has been created and the Mobility & Care Manager has started up, the application tries to contact the compliant concept license server on <https://licensing.compliant-concept.ch> It then displays a form to register the the installation using an e-mail and password. The e-mail address must be confirmed by opening a link that is sent to the supplied e-mail address.



The screenshot shows a 'Customer Registration' window. It has two main sections: 'Login with email and password (already registered users)' and 'New Registration'. The 'New Registration' section includes fields for Institution, Country (set to 'Schweiz'), Your distributor (set to 'compliant concept AG'), First Name, Last Name, Gender (Male selected), Email, Choose password, and Confirm password. Callouts point to the Institution field (Name of institution), the distributor dropdown (Name of your distributor if known or „compliant concept“), and the Email field (E-mail address of contact person (Administrator)).

Restart the Mobility & Care Manager application. If no error message nor the registration form is displayed within 30s after start, then everything is fine to proceed.

3.4. Duplication of “golden image” database for each sub-institution

Now the “MobilityMonitoring” database on the SQL Server can be duplicated as needed for every sub-institution using SQL Management Studio.

Each copy of the golden image must then be manipulated using the sql script below. This ensures that each database can be identified by a unique id and is important for the application to run properly!

```
update dbo.Settings
set Settings.SettingsId = newid();
```

It is recommended to create a dedicated sql user and password for each single database or to protect data base access by windows group policies in order to ensure maximal data protection.

3.5. Wireless Server installation and configuration

Now that all databases are available, the Wireless Server application can be installed and configured according to manual **M-000010**. This installation can be on the same server als the SQL Server instance or on separate windows server instance.

3.6. Rollout of client application

Now rollout the client application using your preferred procedure. See document “MSI Installer” (**M-000011**) for details how to specifiy the database connection string for each installation or user.

3.7. License activation

The license for each tenant / database must be activated one time. Recommended procedure is that an end user of each tenant starts the Mobility & Care Manager client from his Windows account and fills out the license registration from and then validates the registered e-mail address.

Alternatively, the already registered e-mail address from step 3.3 can be used to register and activate all tenant’s databases. Note that for each tenant, a different windows user and/or machine name must be used.

Document Versions

Version	Release Date	Change	Prepared	Reviewed	Approved
1.0.0	18.08.2017	first revision	men	(jannick)	bhu (pdx)